



**Noise Monitoring Result**

**Day Time (0700 - 1900hrs on normal weekdays)**

Location: M1a - Harbour Road Sports Centre

Date	Time	Weather	Measurement Noise Level			Baseline Level	Construction Noise Level	Limit Level
			Leq	L10	L90	Leq	Leq	Leq
Unit: dB(A), (30-min)								
01/09/14	9:23	Fine	76.1	79.0	70.5	72	74	75
10/09/14	14:23	Fine	73.9	76.0	69.0	72	69	75
16/09/14	15:43	Fine	71.1	73.0	66.5	72	71	75
23/09/14	9:45	Fine	73.6	76.5	71.5	72	68	75

Location: M2b - Noon-day gun area

Date	Time	Weather	Measurement Noise Level			Baseline Level	Construction Noise Level	Limit Level
			Leq	L10	L90	Leq	Leq	Leq
Unit: dB(A), (30-min)								
01/09/14	10:32	Fine	69.9	71.0	67.5	68	66	75
10/09/14	15:07	Fine	68.4	69.5	66.0	68	61	75
17/09/14	14:02	Cloudy	70.8	72.0	68.0	68	68	75
23/09/14	10:30	Cloudy	72.5	75.5	68.5	68	71	75

Location: M3a - Tung Lo Wan Fire Station

Date	Time	Weather	Measurement Noise Level			Baseline Level	Construction Noise Level	Limit Level
			Leq	L10	L90	Leq	Leq	Leq
Unit: dB(A), (30-min)								
01/09/14	11:21	Fine	66.9	68.0	65.5	69	67	75
10/09/14	15:51	Fine	69.5	72.7	64.0	69	61	75
17/09/14	14:42	Cloudy	65.5	67.0	63.5	69	66	75
23/09/14	11:10	Cloudy	67.7	68.5	65.5	69	68	75

Location: M4b - Victoria Centre

Date	Time	Weather	Measurement Noise Level			Baseline Noise Level	Construction Noise Level	Limit Level
			Leq	L10	L90	Leq	Leq	Leq
Unit: dB(A), (30min)								
01/09/14	13:00	Fine	72.5	73.0	71.5	67	71	75
11/09/14	14:40	Fine	70.3	72.0	67.5	67	67	75
17/09/14	15:24	Fine	68.2	69.0	66.0	67	61	75
23/09/14	13:00	Cloudy	69.2	70.5	67.0	67	65	75

Location: M5b - City Garden

Date	Time	Weather	Measurement Noise Level			Baseline Level	Construction Noise Level	Limit Level
			Leq	L10	L90	Leq	Leq	Leq
Unit: dB(A), (30min)								
01/09/14	14:01	Fine	71.3	73.5	68.5	68	69	75
11/09/14	15:25	Fine	70.6	71.5	69.0	68	67	75
17/09/14	16:16	Cloudy	72.5	73.5	71.5	68	71	75
23/09/14	13:50	Cloudy	70.0	71.0	68.5	68	66	75

Location: M6 - HK Baptist Church Henrietta Secondary School

Date	Time	Weather	Measurement Noise Level			Baseline Level	Construction Noise Level	Limit Level
			Leq	L10	L90	Leq	Leq	Leq
Unit: dB(A), (30-min)								
01/09/14	14:42	Fine	72.8	74.0	70.5	71	69	70
11/09/14	16:00	Fine	73.3	74.0	71.5	71	70	70
18/09/14	14:25	Fine	71.7	73.0	69.5	71	65	70
23/09/14	14:35	Cloudy	72.5	73.5	70.5	71	68	70



## Noise Monitoring Result

### Day Time (0700 - 1900hrs on normal weekdays)

Location: M7e - International Finance Centre (Eastern End of Podium) (Reference Station)

Date	Time	Weather	Measurement Noise Level			Baseline Level	Construction Noise Level	Limit Level
			Leq	L10	L90	Leq	Leq	Leq
Unit: dB(A), (30-min)								
01/09/14	15:45	Fine	67.5	69.5	64.5	67	59	N/A
11/09/14	10:45	Fine	67.9	69.0	65.0	67	61	N/A
15/09/14	13:40	Fine	70.5	72.5	66.0	67	68	N/A
22/09/14	13:20	Cloudy	66.0	67.2	62.0	67	66	N/A

Location: M7w - International Finance Centre (Western End of Podium)

Date	Time	Weather	Measurement Noise Level			Baseline Level	Construction Noise Level	Limit Level
			Leq	L10	L90	Leq	Leq	Leq
Unit: dB(A), (30-min)								
01/09/14	16:24	Fine	66.3	68.0	64.0	69	66	75
11/09/14	10:05	Fine	66.0	67.5	63.5	69	66	75
15/09/14	14:15	Fine	67.4	70.0	63.0	69	67	75
22/09/14	14:00	Cloudy	71.7	76.0	72.5	69	68	75

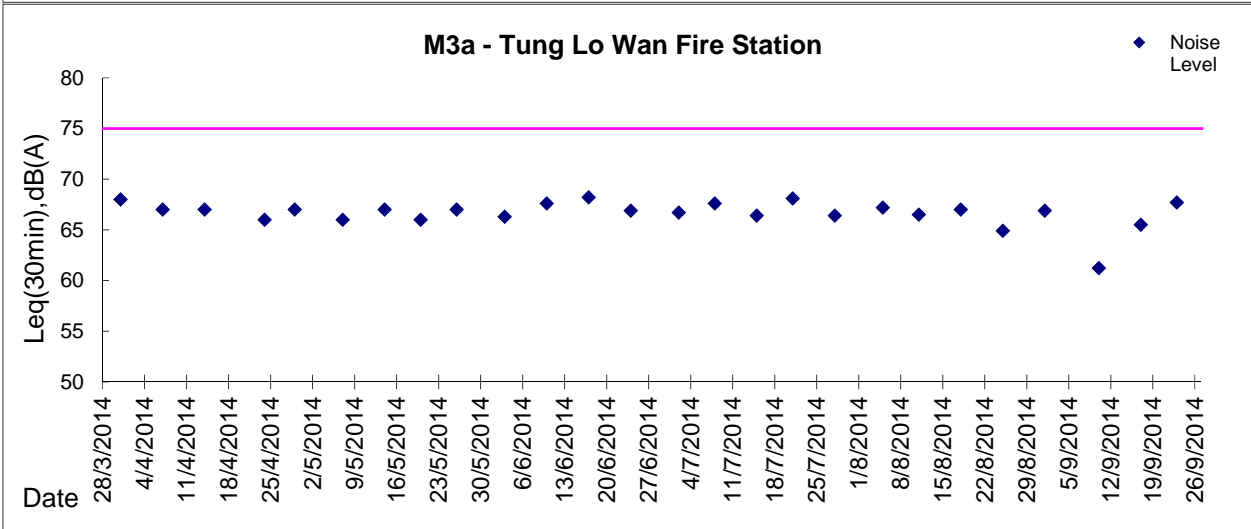
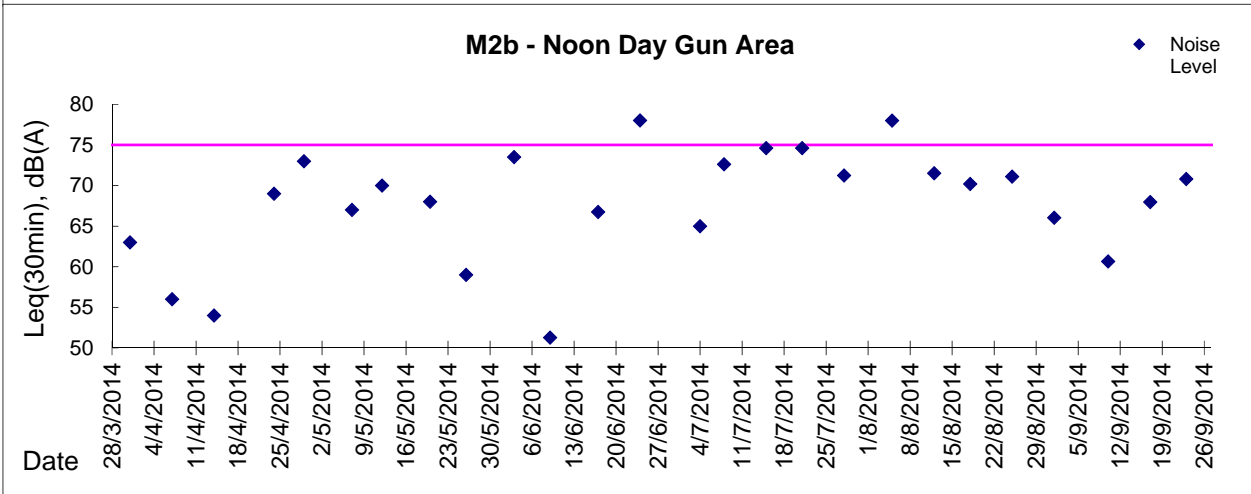
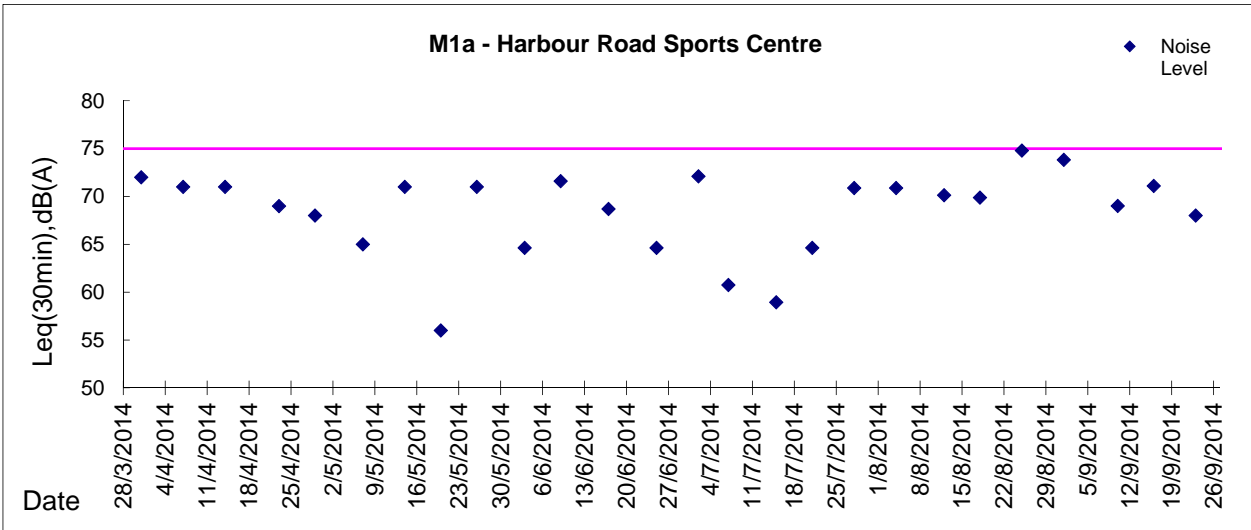
Location: M8 - City Hall

Date	Time	Weather	Measurement Noise Level			Baseline Level	Construction Noise Level	Limit Level
			Leq	L10	L90	Leq	Leq	Leq
Unit: dB(A), (30-min)								
01/09/14	17:16	Fine	64.7	65.0	62.0	64	56	70
11/09/14	13:45	Fine	61.1	63.0	57.5	64	61	70
15/09/14	13:05	Cloudy	63.3	65.0	59.0	64	63	70
22/09/14	14:45	Cloudy	60.3	62.0	57.0	64	60	70



**Graphic Presentation of Noise Monitoring Result**

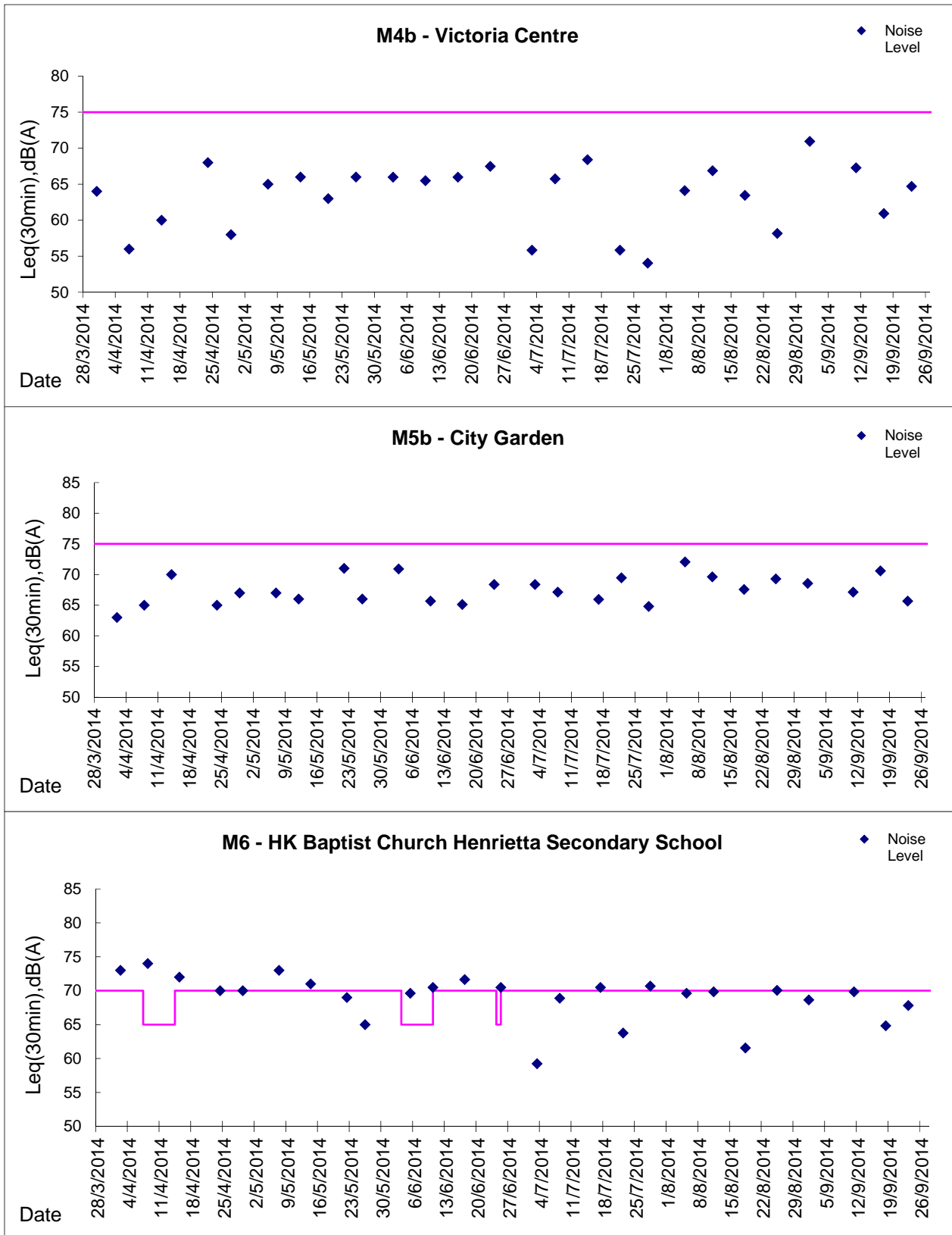
**Day Time (0700 - 1900hrs on normal weekdays)**





**Graphic Presentation of Noise Monitoring Result**

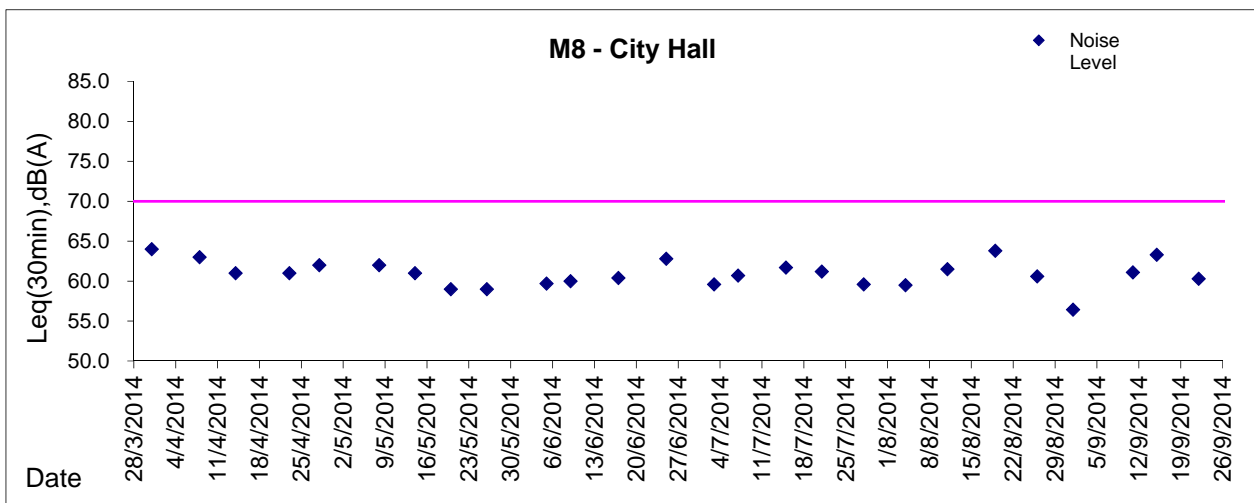
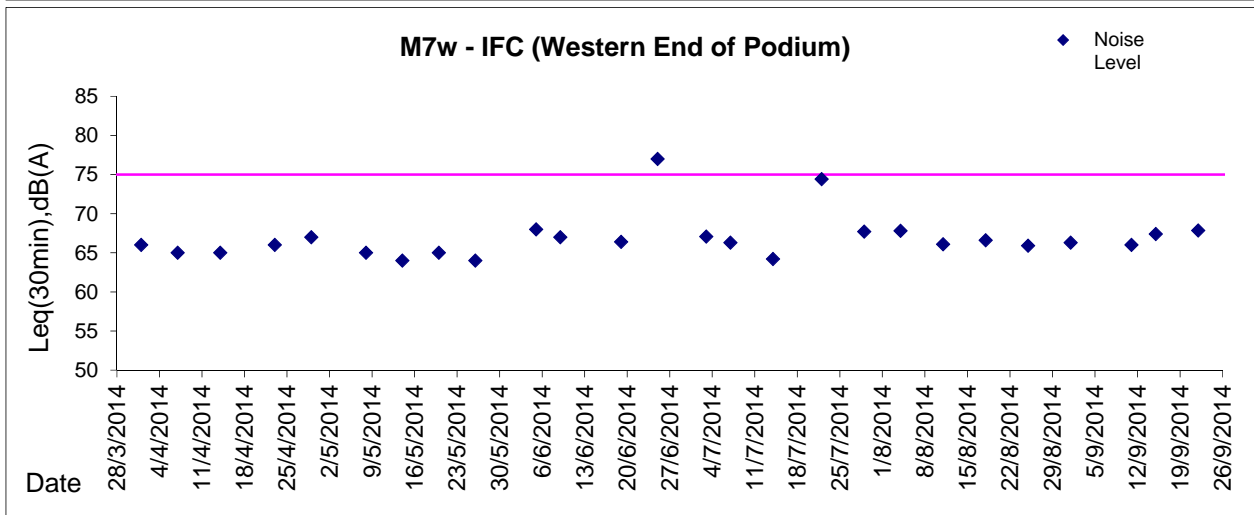
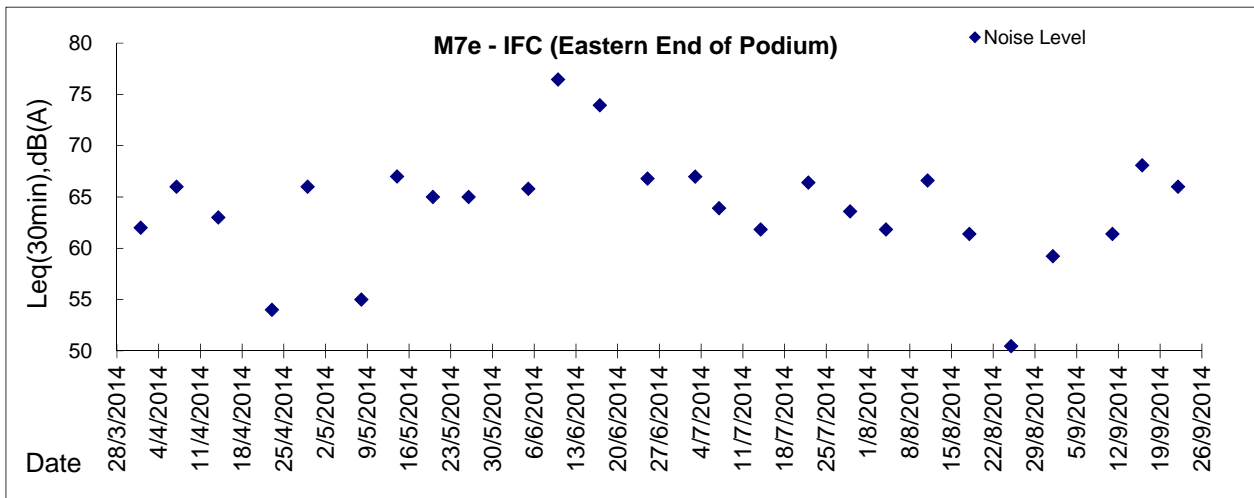
**Day Time (0700 - 1900hrs on normal weekdays)**





**Graphic Presentation of Noise Monitoring Result**

**Day Time (0700 - 1900hrs on normal weekdays)**



\* Remark: M7e - IFC (Eastern End of Podium) is a reference monitoring station